

# MTS500M

Pressure and Temperature  
On Board Calibration Kit

Martin Bruusgaard AS has developed an onboard test system for the Pressure & Temperature kit. The maintenance and service can be done onboard, without yearly shore certification. No need to send the equipment yearly on shore for calibration.

## Cost saving. Simple logistics

### E0 test kit MTS500M for Pressure and Temperature

Our Mini Test Kit meet most applications on board Mercantile Vessels as well as Naval Vessels and mobile Offshore Drilling Units refer to pressure and temperature. Our Mini system makes it easy to adjust to the specific needs you might have on certain vessels for pressure and temperature. All Test Kits comes complete with necessary accessories.





### Temperature calibrator TC65

Environmental and regulatory requirements are important parts of QA-systems that has to be implemented on-board. Our portable temperature calibrators cover temperatures up to 650°C. Removable insert for increased flexibility.

- Temperature range 30-650°C
- Accuracy 1 year  $\pm 1,5^\circ\text{C}$
- Accuracy 3 year  $\pm 3,5^\circ\text{C}$



### Pressure calibrator 60 Bar

This Pressure calibrator has been introduced to complement an already extensive range of pressure calibration products and can be used for calibration checks on pressure transmitters, pressure switches, indicators, recorders and controllers.

- Range -0,8 to 60 bar
- Fine adjustment
- Accuracy 0,2% FS



### Test kit:

Martin Bruusgaard AS has developed a calibration test system for the MT 5000M kit for pressure & temperature that can be used, maintained and serviced on board, without yearly on shore certification. No need to send the kit yearly on shore for calibration. The solution is approved by maker.



### Adapter kits

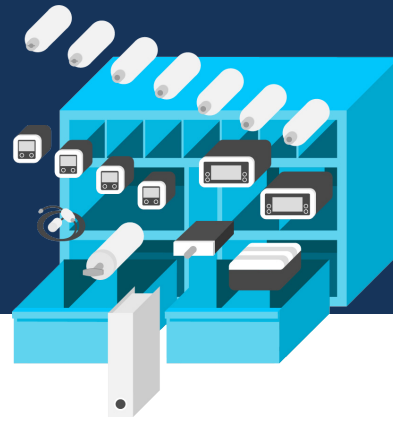
The case comes with adapters to fit BSP and NPT .

- Adapterkit 1 includes four BSP to NTP adapters
- Adapterkit 2 includes three BSP to BSP adapters

Optional:

- Marine adapter, 40mm test flange
- Adapterkit 3, M16x2 F to 1/4" BSP M Quick Connector

# The Bruusgaard System



TBS is a unique turnkey portable gas detection solution, giving you increased safety and substantial cost savings through standardised instruments, routines, training and procurement.

## Logistic Support

At any given time we know the status of all vessels and sites covered by The Bruusgaard System. We consolidate all shipments and make sure you have everything you need on board until next scheduled delivery. This results in fewer shipments and substantial savings!

- Year round follow up of instruments, spares and consumables
- Handling of all shipments & logistics
- Annual reports per vessel including budgeting



## Safety

QA – strict routines and logging

- Crew are able to use instruments and follow routines correctly
- Instruments are in proper working condition at all times
- Instruments are calibrated at correct intervals
- Sensors and other items are replaced at correct intervals
- Usage of instruments is logged, including abnormal observations
- Traceability – instrument history and usage
- Routines and procedures can merge into the overall QA-system

Effective and proven training is an integrated part of The Bruusgaard System.

## Instruments

All the equipment used for gas detection and calibration is placed in a custom-made wall cabinet. Including Log & Instruction Manual, which are crucial to maintaining the safety integrity.

- Standardised vessel specific gas detector solutions
- Total solutions including all equipment and routines necessary for efficient and safe use, storage and maintenance

## Cost Savings

Some of our customers have been able to go from 8 to 10 suppliers down to 1 – translating into cost savings of up to 40-50%. For one vessel, this could be thousands of dollars annually, and for a whole fleet, the cost savings can be dramatic. This is achieved through:

- One contact for worldwide supply of spares & gases
- All service and calibration can be done on site.
- Reductions of instrument types from 10-12 to 2-3

Reduced maintenance costs through:

- On board calibration
- Fewer instruments on board
- No need for spares on board
- One PO per year
- Increased safety
- Less use of administrative time