

AL9000

AlcoMate® AccuCell

The AlcoMate AccuCell (AL-9000) is a state-of-the-art DOT Approved professional grade breathalyzer that features an advanced fuel cell alcohol sensor for maximum precision, and easy one-touch operation.

Product description

The fuel Cell Sensor Technology. AL9000 is intended to measure alcohol in human breath. The accuracy of this device has been established at a Blood Alcohol Concentration of 0.000 to 0.400%BAC or 0.000 to 0.4000‰ or 0.000 to 2.000mg/ℓ BrAC. Accuracy testing was completed according to DOT regulations.

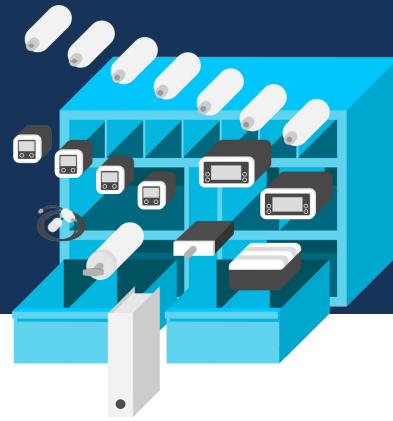
When connected to a PC, results can be stored for documentation. Includes manual, batteries, Software, carry case, 5 mouthpieces.



Specifications

Alcohol Sensor	Long-life Electrochemical Fuel Cell
Size	106 x 50 x 20 mm
Weight	80 g (including batteries)
Battery	Standard 1.5V AAA (x2, included)
Analysis Time	10 Seconds or Less up to 0.100% BAC
Recovery Time	~1 Minute Between Consecutive Tests
Detection Range	0.000% ~ 0.400% BAC
Sensor Accuracy	+/- 0.005% BAC

The Bruusgaard System



TBS is a unique turnkey portable gas detection solution, giving you increased safety and substantial cost savings through standardised instruments, routines, training and procurement.

Logistic Support

At any given time we know the status of all vessels and sites covered by The Bruusgaard System. We consolidate all shipments and make sure you have everything you need on board until next scheduled delivery. This results in fewer shipments and substantial savings!

- Year round follow up of instruments, spares and consumables
- Handling of all shipments & logistics
- Annual reports per vessel including budgeting



Safety

QA – strict routines and logging

- Crew are able to use instruments and follow routines correctly
- Instruments are in proper working condition at all times
- Instruments are calibrated at correct intervals
- Sensors and other items are replaced at correct intervals
- Usage of instruments is logged, including abnormal observations
- Traceability – instrument history and usage
- Routines and procedures can merge into the overall QA-system

Effective and proven training is an integrated part of The Bruusgaard System.

Instruments

All the equipment used for gas detection and calibration is placed in a custom-made wall cabinet. Including Log & Instruction Manual, which are crucial to maintaining the safety integrity.

- Standardised vessel specific gas detector solutions
- Total solutions including all equipment and routines necessary for efficient and safe use, storage and maintenance

Cost Savings

Some of our customers have been able to go from 8 to 10 suppliers down to 1 – translating into cost savings of up to 40-50%. For one vessel, this could be thousands of dollars annually, and for a whole fleet, the cost savings can be dramatic. This is achieved through:

- One contact for worldwide supply of spares & gases
- All service and calibration can be done on site.
- Reductions of instrument types from 10-12 to 2-3

Reduced maintenance costs through:

- On board calibration
- Fewer instruments on board
- No need for spares on board
- One PO per year
- Increased safety
- Less use of administrative time